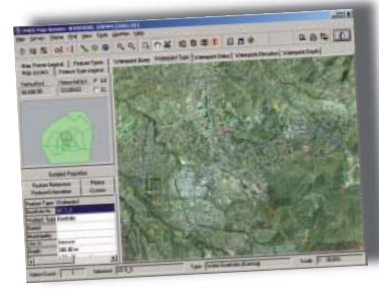


GeoMon Groundwater monitoring software



GeoMon is a groundwater software package developed specifically for use by municipalities and other industries. It is fully integrated within IMQS, a product used widely by many municipalities. IMQS (Infrastructure Management Query Station) is a user-friendly GIS based, but GIS independent, infrastructure and asset management query station which includes reporting, graphing and map viewing capabilities with an ad-hoc query facility for urban and rural environments. This is achieved through a common and user-friendly front-end on a scalable database platform, allowing users the freedom to port information from standard desktop database packages to the state-of-the-art packages such as Microsoft SQL Server and Oracle 9i. IMQS is currently used by over one hundred government and municipal authorities in Southern Africa and has been in use for the past 8 years. IMQS addresses many components of Municipal management (Figure 1),

GeoMon, the groundwater monitoring module, developed by GEOSS (Pty) Ltd. in association with IMQS (Pty) Ltd., comprises reports, graphs and maps for comprehensive monitoring and management of groundwater. This is a crucial task for municipalities where groundwater plays a role in meeting domestic water requirements. Careful groundwater monitoring and management is essential for the sustainable use of this critical resource. Integrated into GeoMon is abstraction data (Figure 2) and rainfall, as well as recommended and legally permitted usage, facilitating not only optimal borehole management but aquifer management as well.

One of the major advantages of GeoMon is that it is fully integrated with municipal or industry infrastructure data. Groundwater supply schemes can thus be assessed with pipeline data, reservoir data, domestic usage etc and viewed against a backdrop of high resolution geo-rectified aerial photography. In addition, GeoMon is regularly updated and well supported by a team of IT professionals supporting the IMQS products. GEOSS has the experience to train and equip municipalities and industries in groundwater monitoring enabling them to manage their own collection of data and data entry into GeoMon. By organising data graphically and in a format for professional review, GeoMon enables the swift, proactive and up-to-date monitoring of data, providing the capability to detect problems early.

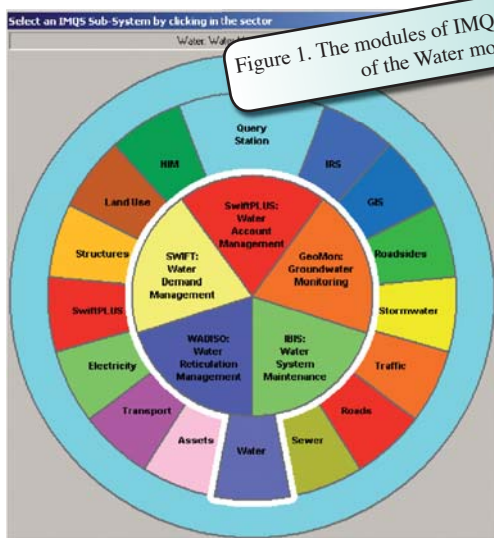


Figure 1. The modules of IMQS. GeoMon is part of the Water module.

By: Julian Conrad, Director GEOSS - Geohydrological and Spatial Solutions (Pty) Ltd, TechnoPark, Stellenbosch.

For further information on IMQS, please contact Rob Dijkstra (rob@imqs.co.za) tel. 080 123 4677 or 080 123 IMQS. For more information on GeoMon, please contact Julian Conrad, GEOSS – Geohydrological and Spatial Solutions (Pty) Ltd., tel. 021-8801079 (julian@geoss.co.za).

Figure 2. GeoMon display screen showing groundwater levels and abstraction volumes.

including: roads, roadsides; storm water; traffic; sewer; water; assets; transport; electricity; structures and land use.

The Water module includes the following sub-modules: SWIFT (Water Demand Management); SWIFTPlus (Water Account Management); WSM (Water System Maintenance); Wadiso (Water Reticulation Management); and now GeoMon (Groundwater Monitoring).

Clients have the freedom to choose and purchase only those modules (or sub-modules) needed for their particular task. Every integrated module extracts the necessary information for display in IMQS, thus allowing clients flexibility in customising a management system which best suits their needs.

